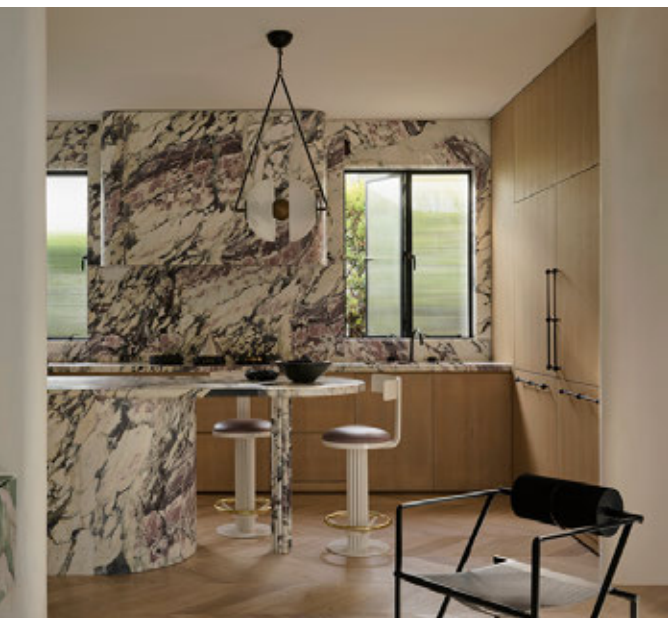


A full-page photograph of a modern bathroom. The walls and floor are covered in large tiles of green marble with prominent brown and gold veins. A large rectangular mirror is mounted on the wall, reflecting a bright, circular light fixture. Below the mirror is a white rectangular sink set into a marble countertop. To the right of the sink, a small, dark, rounded vase holds a dried branch with small, brown, berry-like decorations. The overall aesthetic is sophisticated and contemporary.

# GREG NATALE

ICON OF TODAY





## ICON OF TODAY



Greg Natale founded his eponymous studio in Sydney in 2001 and has become Australia's foremost voice in glamorous, pattern rich interiors. Two decades on, his reach is global, with commissions that carry his signature mix of precision, luxury and bravado to clients far beyond Australia. He treats colour and pattern as structure rather than surface, so even the boldest moves feel disciplined, edited and unmistakably his.

Projects such as the award winning Walsh Bay Penthouse and the moody Bondi Beach apartment exemplify that layered sophistication, where geometry, custom joinery and richly veined stone sit alongside saturated palettes, sculptural lighting and art. The drama is deliberate, the lines are exact, and every choice is choreographed for impact and ease in equal measure. It is maximalism made intelligent.

Through furniture, wallpaper and homeware collections, he extends this language across disciplines, shaping how contemporary luxury is expressed in homes and hospitality worldwide. We recognise him as an icon for the way he pushes boundaries with clarity, using confident colour, rigorous geometry and couture level detailing to set the pace for modern interior design on a global stage.

